

Trace the dotted letters.

Be completely

HUMBLE

and

GENTLE;

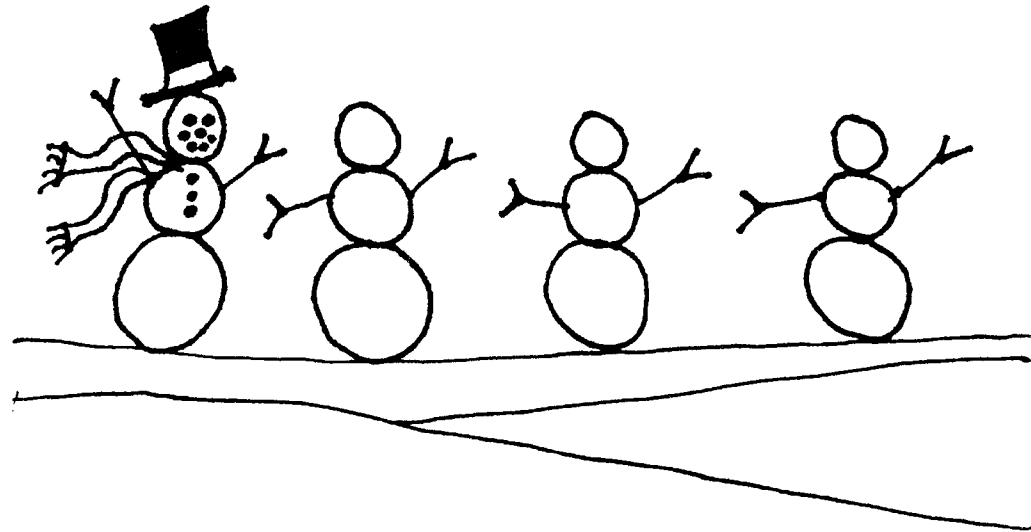
be patient, bearing
with one another in

LOVE.

- Ephesians 4:2

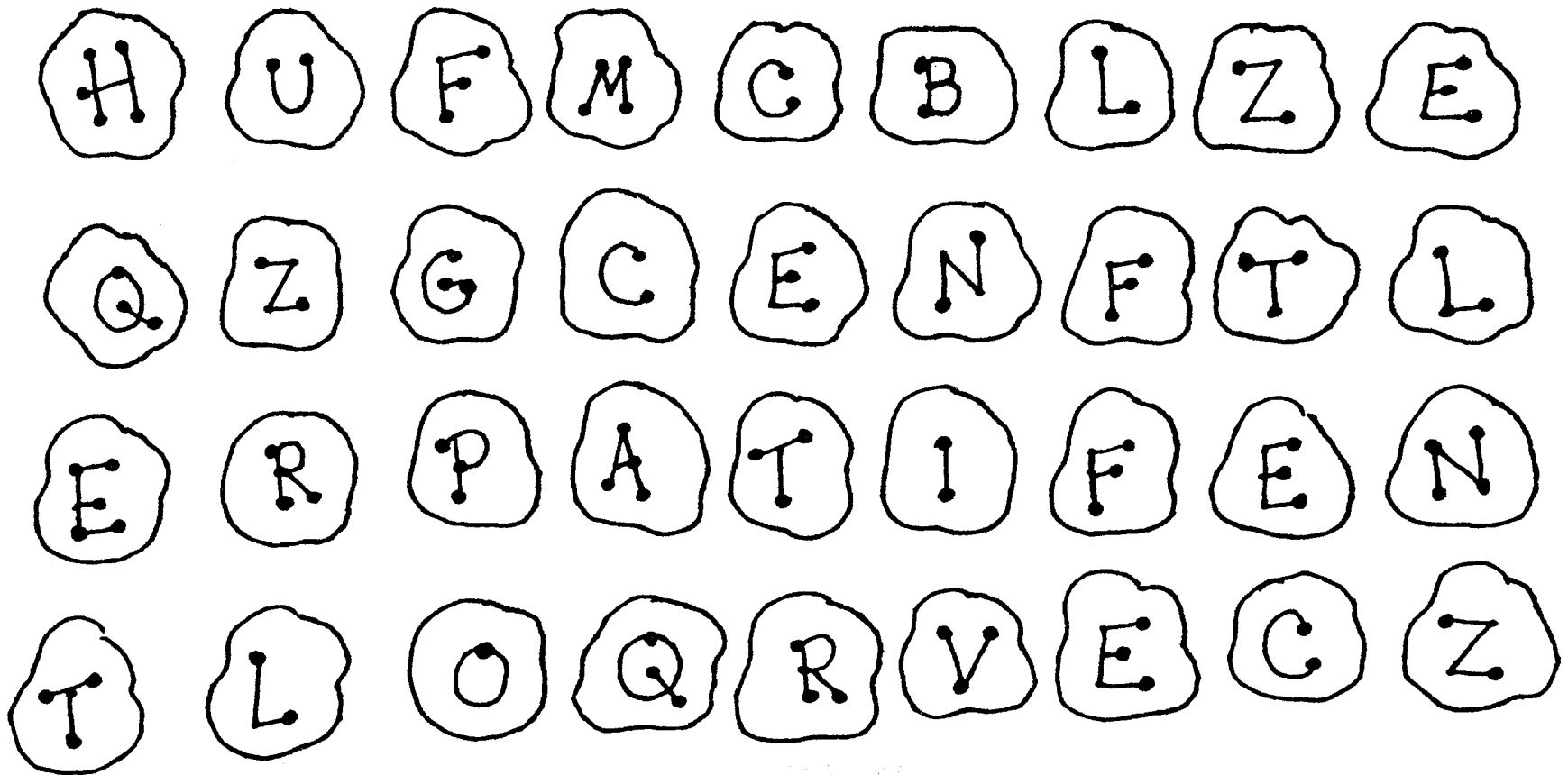


The SABBATH VISITOR



Finish the snowmen with
hats, eyes, noses, scarves
and buttons.

Cross out the snowballs below with these letters: F, Z, C, Q and R



Now, fill in the remaining letters, in order, in the blank spaces to finish the verse:

Be completely _____ and _____;
be _____, bearing with one another in _____.

– Ephesians 4:2